



Gair-Na-Mara,

10 Seafield, Finstown, KW17 2EW



 3 Bed

 1 Bath

 1 Public



TAKE A LOOK INSIDE

Gair-Na-Mara is a spacious and well-positioned three-bedroom bungalow enjoying stunning views across the bay and a peaceful setting within easy reach of local amenities. Offering generous accommodation throughout, including a kitchen/diner, a large dual-aspect living room, three double bedrooms, a shower room and an ensuite WC, this attractive home presents an excellent opportunity for buyers to modernise and create a home tailored to their own tastes and requirements.

KEY FEATURES

- Oil central heating
- UPVC double glazed windows
- 3 double bedrooms
- Large dual-aspect living room with beautiful sea views
- Kitchen/diner
- Shower Room and ensuite WC
- Rear porch which doubles as a utility room
- 2 driveways and a garage with up and over door
- Garden to front and rear.
- Firth Primary School and Stromness Academy catchment area



Offers Over £250,000

Set within a desirable location in Finstown, Gair-Na-Mara offers bright, spacious accommodation all on one level. The property comprises a welcoming kitchen/diner, alongside a generous dual-aspect living room that enjoys an abundance of natural light. There are three well-proportioned double bedrooms, a family shower room and an ensuite WC serving the principal bedroom. To the rear, a practical porch doubles as a utility area and provides direct access to the enclosed rear garden. One of the property's standout features is its breathtaking sea views across the bay, which can be appreciated from the garden and from all rear-facing windows. The rear garden offers a good degree of privacy, creating a wonderful space to relax and enjoy the ever-changing coastal scenery. Further benefits include a garage with an up-and-over door and two separate driveways, providing ample off-street parking for multiple vehicles. This combination of generous accommodation, outstanding views and scope for improvement makes Gair-Na-Mara a particularly appealing opportunity for buyers looking to put their own stamp on a property.

EXTRAS

Floor and window coverings, white goods and remaining furniture are included in the sale price.





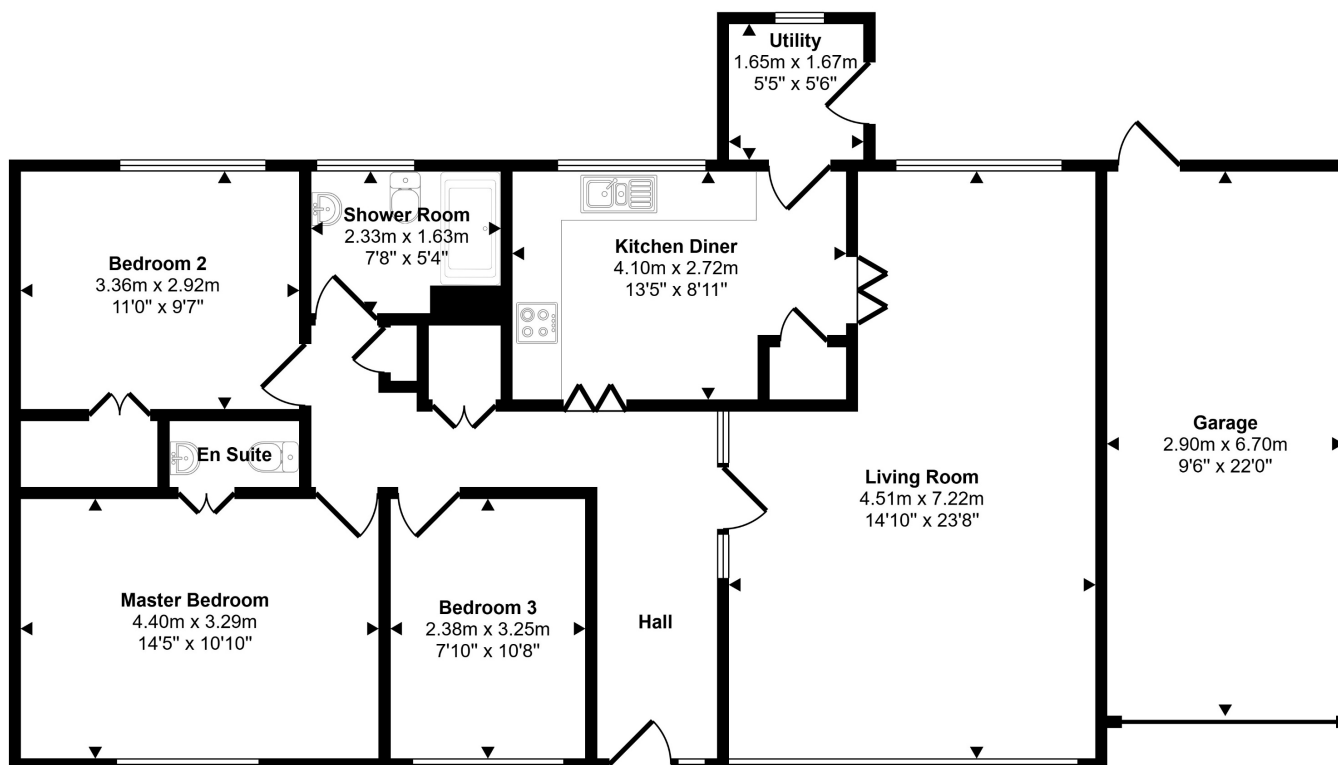
LOCATION

Despite its peaceful setting and open outlook, the property is conveniently located just a short stroll from Finstown's local amenities and the nearby Firth Primary School. Excellent transport connections are available via the X1 bus service, which passes through the village and provides regular links to Stromness, Kirkwall and St Margaret's Hope.

/// What3words : ///cherubs.instant.joked



Approx Gross Internal Area
119 sq m / 1286 sq ft



Thinking about selling?

Start with a free market appraisal from Lows. Our experts will guide you through the process, from understanding your home's value to managing marketing and conveyancing seamlessly with our in-house solicitors — all under one roof.



Viewing

For an appointment to view please contact Lows on 01856 873151 or enquiries@lowsorkney.co.uk



All further enquiries should be directed to Lows, to whom all offers should be submitted in writing.

Services	Council Tax / Rating	EPC Rating	Date of Entry
Mains Water Mains Electricity Mains drainage Broadband Speed – 80 Mbps Mobile Network – EE, O2, Three, Vodafone	Band D	Band D	Flexible

www.lowsorkney.co.uk

[Lows Facebook Page](#)

The following notes are of crucial importance to intending viewers and/or purchasers of the property.

1. These particulars do not form part of any offer or contract and all statements and measurements contained herein are believed to be correct but are not guaranteed, and any intending purchaser must satisfy themselves as to their accuracy. Prospective purchasers are advised to have their interest noted through their solicitors as soon as possible in order that they may be informed in the event of an early closing date being set for receipt of offers.
2. No responsibility can be accepted for any expenses incurred by intending purchasers in inspecting properties which have been sold or withdrawn.