



Elskafjor, 35 Hillside Road



Stromness, KW16 3HR

 3 Bed

 1 Bath

 1 Public



TAKE A LOOK INSIDE

Elskafjor is a beautifully presented three-bedroom detached cottage set within generous gardens in a sought-after area of Stromness. This charming home offers bright, spacious accommodation throughout and has been thoughtfully maintained to a high standard, making it an ideal family home.

KEY FEATURES

- Beautifully presented three-bedroom detached cottage
- uPVC double glazed windows
- Air source heating and radiators
- Bright and spacious living room with multi-fuel stove with back boiler for radiators
- Stunning open plan kitchen and dining area with integrated appliances
- Three double bedrooms with build-in wardrobes
- Modern shower room
- Off-street parking
- School catchment area for Stromness Primary School and Stromness Academy

EXTRAS

All floor and window coverings and fridge-freezer are included in the sale price.

Offers Over £275,000

The property is entered via a welcoming vestibule leading into a light-filled and comfortable living room, featuring a solid fuel stove which creates a cosy focal point. Large windows provide an abundance of natural light while offering pleasant views over the surrounding garden.

To the rear, a superb open-plan kitchen and dining area forms the heart of the home. The contemporary kitchen is well laid out with generous worktop space, integrated appliances and a central worktop, perfect for both everyday living and entertaining. The dining area enjoys a relaxing outlook over the garden.

All three double bedrooms are well-proportioned and benefit from built-in wardrobes, offering excellent storage. A modern shower room with quality fittings completes the internal accommodation.

Externally, the property sits within attractive front and rear gardens. The front garden features a patio area and mature planting, while the rear offers a private space with a greenhouse/potting shed, drying area and raised beds—ideal for keen gardeners. To the side, there is a large garden shed providing additional storage, along with a driveway offering off-street parking.





Elskafjor, 35 Hillside Road



LOCATION

Elskafjor is situated on Hillside Road in the picturesque town of Stromness, one of Orkney's most sought-after locations. Known for its charming character and historic waterfront, Stromness offers a welcoming community atmosphere alongside a range of local amenities including shops, cafés, primary and secondary schooling, and transport links, including the nearby ferry terminal.

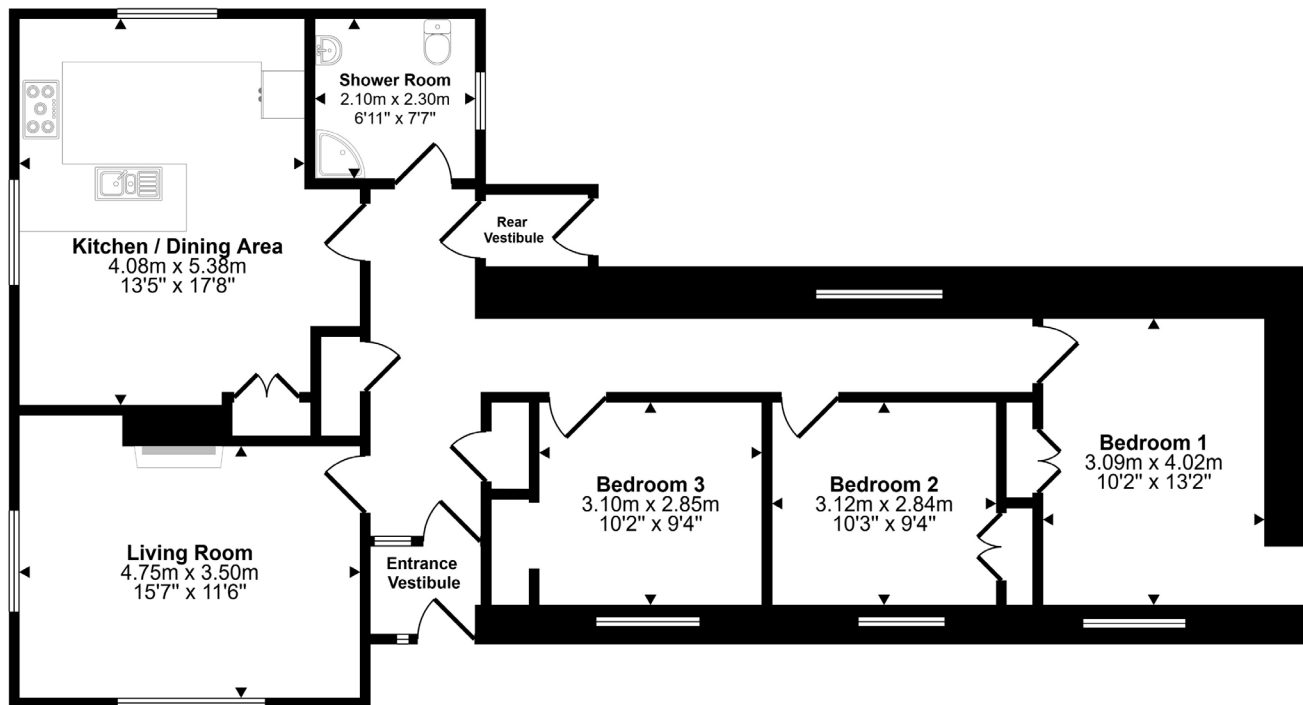
The property enjoys a peaceful residential setting while remaining within easy reach of the town centre. The surrounding area provides excellent opportunities for outdoor pursuits, with coastal walks, countryside views, and nearby beaches all easily accessible.



What3words : ///ourselves.luxury.royal



Approx Gross Internal Area
109 sq m / 1170 sq ft



Thinking about selling?

Start with a free market appraisal from Lows. Our experts will guide you through the process, from understanding your home's value to managing marketing and conveyancing seamlessly with our in-house solicitors – all under one roof.



Viewing

For an appointment to view please contact Lows on 01856 873151 or enquiries@lowsorkney.co.uk



All further enquiries should be directed to Lows, to whom all offers should be submitted in writing.

Services	Council Tax / Rating	EPC Rating	Date of Entry
Mains Water Mains Electricity Mains Drainage Broadband Speed - 80 Mbps Mobile Network - Vodafone, EE, O2	Band D	Band E	Flexible

www.lowsorkney.co.uk

[Lows Facebook Page](#)

The following notes are of crucial importance to intending viewers and/or purchasers of the property.

1. These particulars do not form part of any offer or contract and all statements and measurements contained herein are believed to be correct but are not guaranteed, and any intending purchaser must satisfy themselves as to their accuracy. Prospective purchasers are advised to have their interest noted through their solicitors as soon as possible in order that they may be informed in the event of an early closing date being set for receipt of offers.
2. No responsibility can be accepted for any expenses incurred by intending purchasers in inspecting properties which have been sold or withdrawn.