



17 Grieveship Terrace



Stromness, KW16 3AY

 3 Bed

 1 Bath

 1 Public



TAKE A LOOK INSIDE

Situated in a desirable area of Stromness, this well-presented three-bedroom terraced house offers bright and spacious accommodation, ideal for a range of buyers including families, first-time purchasers and those seeking a comfortable home in a charming coastal town.

KEY FEATURES

- 3 double bedrooms with built-in wardrobes
- Large living room with views towards the sea
- Kitchen with space for table and chairs
- Electric storage heating
- Timber framed double glazed windows
- Utility area
- Large rear garden with shed
- School catchment area for Stromness Primary School and Stromness Academy

EXTRAS

All floor coverings and some items of furniture are included in the sale price.



Offers Over £180,000

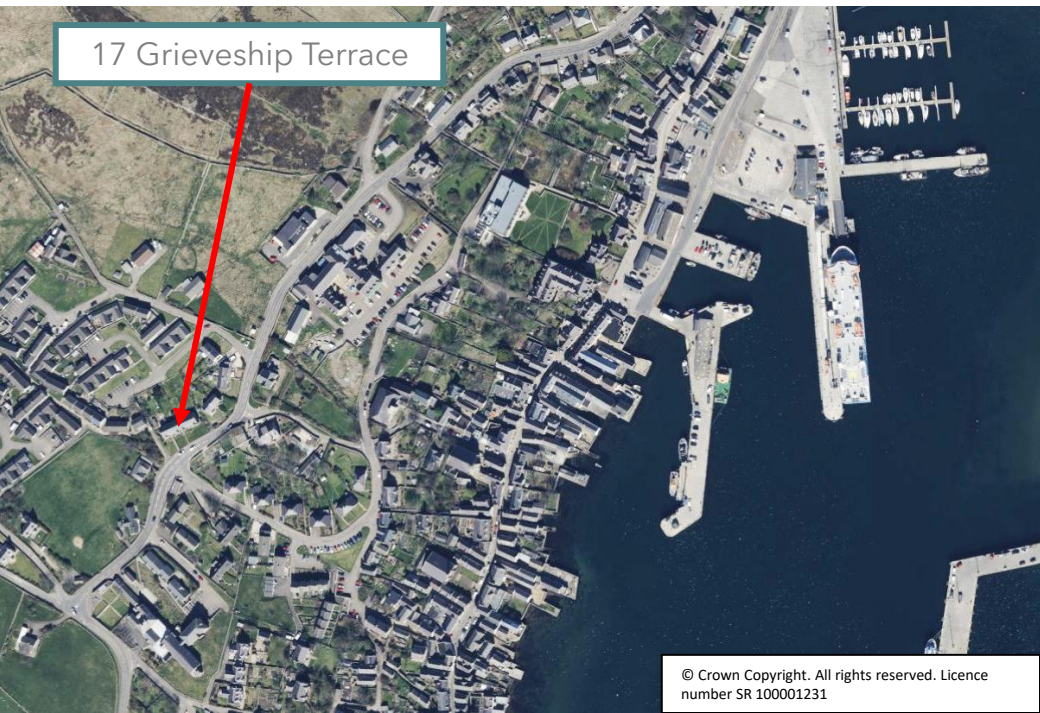
The ground floor comprises a generously proportioned living room, filled with natural light and enjoying attractive sea views, creating a welcoming and relaxing space. The kitchen is well laid out with ample storage and worktop space, and benefits from room for a small dining table and chairs. To the rear, a useful utility area provides additional practicality and access to the garden. The bathroom is fitted with a three-piece suite, including bath, wash hand basin and WC.

Upstairs, the property offers three good-sized double bedrooms, each bright and airy, providing comfortable accommodation with scope for personalisation.

Externally, the property features a large rear garden, mainly laid to lawn, with a garden shed and plenty of space for outdoor activities or further landscaping. A front garden area with lawn enhances the property's kerb appeal.

This property presents an excellent opportunity to acquire a spacious home in a sought-after location, with great potential to modernise and make your own.





LOCATION

17 Grieveship Terrace is situated in a popular residential area on the edge of Stromness, one of Orkney's most picturesque and historic towns. Known for its narrow winding streets, harbour setting and vibrant community, Stromness offers a unique coastal lifestyle with a range of local amenities including shops, cafés, restaurants, primary and secondary schools, and a medical practice.

The property enjoys a convenient position within easy reach of the town centre and harbour, where regular ferry links connect to mainland Scotland. The area is well served by local transport, making it an ideal base for commuting or exploring the wider islands.





Thinking about selling?

Start with a free market appraisal from Lows. Our experts will guide you through the process, from understanding your home's value to managing marketing and conveyancing seamlessly with our in-house solicitors – all under one roof.

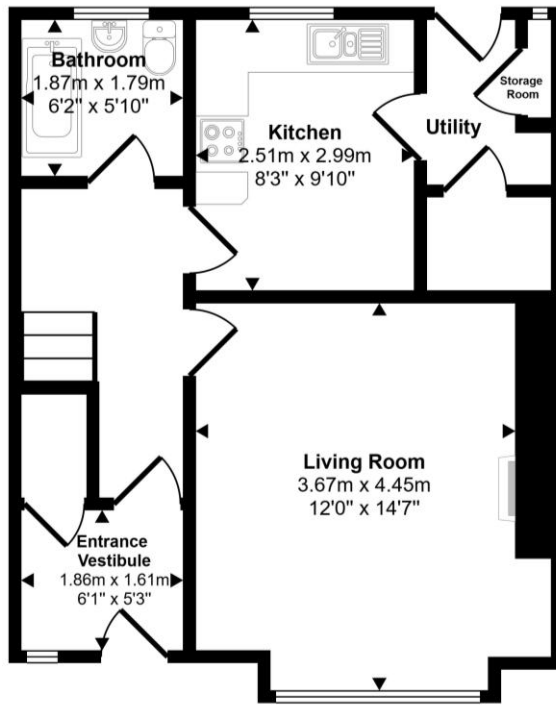


Viewing

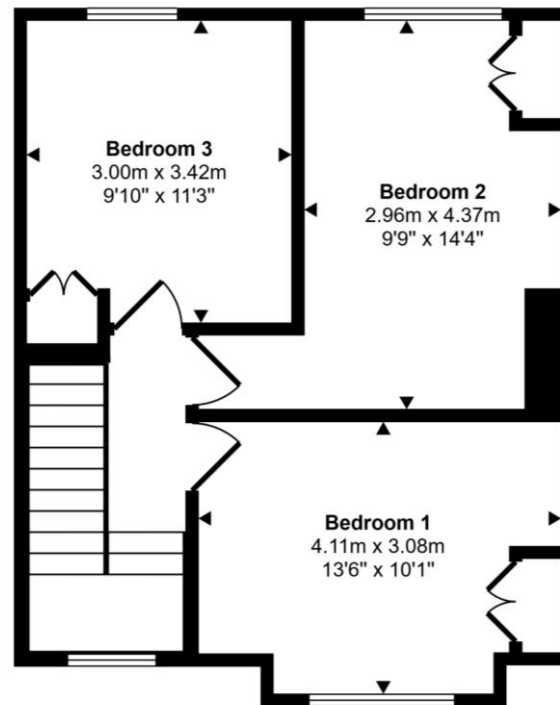
For an appointment to view please contact Lows on 01856 873151 or enquiries@lowsorkney.co.uk



All further enquiries should be directed to Lows, to whom all offers should be submitted in writing.



Ground Floor
Approx 45 sq m / 488 sq ft



First Floor
Approx 45 sq m / 481 sq ft

Services	Council Tax / Rating	EPC Rating	Date of Entry
Mains Water Mains Electricity Mains Drainage Broadband Speed - 80 Mbps Mobile Network - Vodafone, EE, O2	Band B	Band E	Flexible